

Installing and Using the Adesso ODBC Driver

Customized Mobile Applications. Now.



Copyright and Trademarks

Neither the documentation nor the software may be copied, photocopied, reproduced, translated, or reduced to any electronic medium or machine-readable form, in whole or in part, without the prior written consent of Adesso Systems, Inc., except in the manner described in the documentation.

©Copyright 2004. Adesso Systems, Inc., 1000 Winter Street, Waltham, MA 02451
All rights reserved.

Adesso is a trademark of Adesso Systems, Inc. Microsoft, Windows, and Pocket PC are registered trademarks and Windows NT is a trademark of Microsoft Corporation.

Contents

ODBC Driver Basics	1
What is a data source?	1
What is a Machine data source?	1
What are File data sources?	1
Installation Requirements.....	2
For all PCs	2
Local Access	2
Server Access	2
Windows 98 and Windows NT	2
Installing the Adesso ODBC Driver.....	3
Configuration of the ODBC Driver	3
Using the Adesso ODBC Driver in an application.....	4
Limitations.....	4
Diagnostics	4
Type Library.....	4

ODBC Driver Basics

ODBC is a standard for accessing data from data sources. Using our ODBC driver along with the Adesso Platform is a very powerful combination. You can now move your data from backend data systems, through the Adesso Server to your mobile end users. You can also gather information that is collected by your mobile end users and integrate it with your back end systems.

Adesso has created two versions of the ODBC driver; one for access the information stored on the Adesso Server and one for accessing information stored on the local Adesso client. Each version seamlessly links the tables in Adesso to your ODBC application and synchronizes the data. You can now get at your data from any device and through multiple applications.

What is a data source?

A data source is a source of data and the connection information needed to access that data. Examples of data sources are Microsoft Access, Microsoft SQL Server, Oracle RDBMS, a spreadsheet, and a text file. Examples of connection information include server location, database name, logon ID, password, and various ODBC driver options that describe how to connect to the data source.

In the ODBC architecture, an application, such as Microsoft Access or SQL, connects to the ODBC Driver Manager, which in turn uses a specific ODBC driver (for example, Adesso ODBC Driver) to connect to a data source (in this case, the Adesso Server).

To connect to these data sources, you must do the following:

- Install the Adesso ODBC driver on the computer that contains the data source.
- Define a data source name (DSN) by using either the **ODBC Data Source Administrator** to store the connection information in the Windows registry or a DSN file, or a connect string in Visual Basic code to pass the connection information directly to the ODBC Driver Manager.

What is a Machine data source?

Machine data sources store connection information in the Windows Registry on a specific computer with a user-defined name. You can use machine data sources only on the computer they are defined on. There are two types of machine data sources, user and system. User data sources can be used only by the current user and are visible only to that user. System data sources can be used by all users on a computer and are visible to all users on the computer and system-wide services. A machine data source is especially useful when you want to provide added security, because only users who are logged on can view a machine data source and it cannot be copied by a remote user to another computer.

What are File data sources?

File data sources (also called DSN files) store connection information in a text file, not the Windows Registry, and are generally more flexible to use than machine data sources. For example you can copy a file data source to any computer with the correct ODBC driver so that your application can rely on consistent and accurate connection information to all the computers it uses. Or you can place the file data

source on a single server, share it between many computers on the network, and easily maintain the connection information in one location.

Downloading Adesso ODBC Driver

The Adesso ODBC driver can be found on the MyAdesso page on our web site. You can also find the driver from our Management Console under the Download menu. Users of the Adesso Personal Edition can request the ODBC driver from Customer Service???

Follow these steps to download the Adesso ODBC driver.

► To download the ODBC driver

1. Start your browser and navigate to <http://www.adessosystems.com>.
2. Select **Login**.
3. Login to Adesso by filling in your email address (Adesso Registration) and Adesso password, and then click **Login/Register**.
You will now be on the MyAdesso page.
4. Go to Download and Resources and select Complete List.
6. Select Adesso ODBC Driver to begin the download process.
When the download is complete, you are ready to install the software.

Installing the Adesso ODBC Driver

To get up and running with the Adesso ODBC driver, you must install the software for this driver and make sure that you can connect to an Adesso Server for synchronization.

Installation Requirements

Before you install the Adesso ODBC driver, make sure that your desktop, laptop or Tablet meets the requirements detailed below.

For all PCs

Local Access

- The Adesso client will need to be installed to access data in local Adesso applications.

Server Access

- The Adesso client will need to be installed on your device.
- A valid account on the Adesso Server to store the data.
- A valid registration/login to access the data.

Windows 98 and Windows NT

To install the Adesso ODBC driver on machines running Windows 98 or Windows NT, you will need to install Windows Installer service, which may be downloaded from: <http://www.adessosystems.com/downloads/instmsia.exe> (for 98) or <http://www.adessosystems.com/downloads/instmsiw.exe> (for NT).

Installing the Adesso ODBC Driver

Follow these steps to complete the installation.

► To install the Adesso ODBC Driver

1. Close all programs.
- 2a. Double-click the icon, SetupODBC.msi to launch the Install Wizard, OR
- 2b. From the **Start** menu, select **Run**, and then type the path to the install file, SetupODBC.msi.
The install wizard starts.
3. Follow the Wizard instructions to complete the installation to the desktop, laptop, or tablet computer.
4. When the Install Wizard has completed all the steps, click **Finish** to close the Install Wizard.
The process is complete. The Adesso ODBC driver is installed on your Computer.

Note: You will now need to configure the ODBC driver.

Configuration of the ODBC Driver for Server Connection

Follow these steps to configure the Adesso ODBC Driver on a desktop, laptop, or tablet PC to connect to the Adesso Server.

► To configure the Adesso ODBC Driver

1. From the Start menu of your device, click on **Control Panel**.
2. Click on **Administrative Tools**.
3. Click on **Data Sources (ODBC)**.
The Adesso ODBC driver will appear under **User DSN** as **AdessoSQL**.
4. Highlight **AdessoSQL** and click **Configure**.
5. We recommend that you rename the source name to something descriptive as to its use, ie *Field Service Mgmt - Server*
6. Select Adesso Server for Data Location.
7. For Server DSN, Provide the server address, Adesso user email and password, Account name and Application name.
8. Test your connection before saving the configuration.

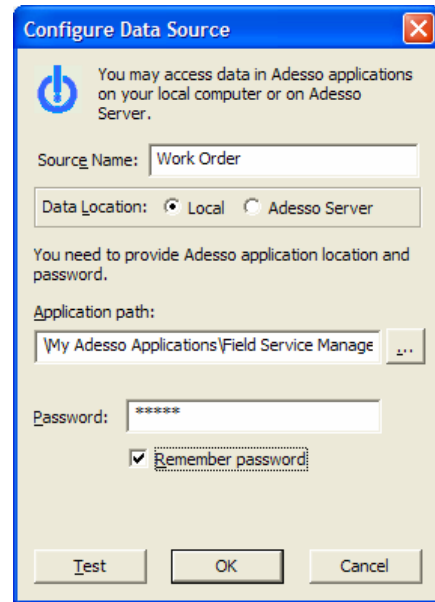
The screenshot shows the 'Configure Data Source' dialog box. It contains the following fields and options:

- Source Name:** AdessoSQL
- Data Location:** Local (unselected), Adesso Server (selected)
- Server address:** adessoSystems.net
- E-mail:** dleccese@adessoSystems.com
- Password:** ***** (with a 'Remember' checkbox checked)
- Account Name:** Corporate Applications
- Application Name:** Field Service Management
- Buttons: Test, OK, Cancel

Configuration of the ODBC Driver for Local Connection

Follow these steps to configure the Adesso ODBC Driver on a desktop, laptop, or tablet PC to connect to a local Adesso application.

- ▶ **To configure the Adesso ODBC Driver**
 1. From the Start menu of your device, click on **Control Panel**.
 2. Click on **Administrative Tools**.
 3. Click on **Data Sources (ODBC)**.
The Adesso ODBC driver will appear under **User DSN** as **AdessoSQL**.
 4. Highlight **AdessoSQL** and click **Configure**.
 5. We recommend that you rename the source name to something descriptive as to its use, ie *Field Service Mgmt - Local or Work Order*.
 6. Select Local for Data Location.
 7. For Local DSN, Provide the full path to the application and password. You can use the browse button to accurately fill in the path.
 8. Test your connection before saving the configuration.



Using the Adesso ODBC Driver in an application

Each application that you want to connect with the Adesso ODBC driver will differ in setup. In many cases, you can either *link* to the Adesso data source or *import* the data from the Adesso data source.

Limitations

- Only SELECT, INSERT, UPDATE and DELETE commands are supported;
- No transaction support;
- No bookmark support.

Diagnostics

Additional diagnostic information may be obtained by setting string registry key HKEY_CURRENT_USER\Software\ODBC\ODBC.INI\AdessoSQL\log to "1". This will result in writing to c:\AdessoODBC.log contents of the last executed command. Also you may use string key "AppendLog" with value "1" to keep older records in log (take care: log may grow very quickly).

Type Library

Adesso Type Library (AdessoLib.dll) provides access to binary data stored in Adesso database. You may use it by adding reference to "Adesso 1.0 Type Library" to Visual Basic or other kind of project. This library allows storing and retrieving data in Adesso binary format.